

公司简介

上海美矿机械有限公司，位于上海市嘉定区，致力于提供基于高性能的液压圆锥式破碎机为中心的中小型矿物处理生产线，广泛使用于冶金，矿山，化工等领域。提供适用于对矿物或石料圆整度要求高，粒度要求均匀的矿物处理，对于金属矿山物料，高等级石料（高速公路路面用石、高层建筑骨料），及砂石料行业，生产能力为2,000-150,000吨/天，（约1,500-10,000方/天）解决方案与成套生产线。

我们致立于自主设计、研发、生产液压圆锥式破碎机。根据客户生产的具体特点和需求，选配其它经过市场认可品牌的给料机、颚式破碎机、皮带输送机，振动筛等，组成不同的破碎与筛分成套设备。

美矿机械液压圆锥破碎机是在瑞典相关专家的指导下，吸取了市场上先进破碎机的优点并加以改进。为客户长期利益考虑，致力于制造优质、高效、长寿命的产品。

产品已出口到美国、加拿大、澳大利亚、俄罗斯、中东、东南亚等20多个国家和地区，市场上信誉良好。

ABOUT MACKORN

Shanghai Mackorn Machinery Co., Ltd is located in Jiading District, Shanghai, PRC. It is committed to providing high performance crushers and crushing and screening solutions in sand and aggregate making and mineral processing industries. With strict quality control, fast technical support and competitive price, MACKORN is winning more and more customer's preference globally.

Hydraulic Cone Crusher is our best seller. It is ideal equipment for secondary and tertiary crushing. We are also specialized in supplying crushing and screening solutions, stationary or mobile from 100tph to 1000tph capacity, to meet our customer's specific requirement. Besides keeping a stock of wearing parts and spare parts for our machines, we can also supply parts for Sandvik and Metso crushers.

Our machines and parts have been exported to United States, Canada, Australia, Russia, UAE, Singapore, Malaysia, and Indonesia and so on. We are earning our good reputation by good quality machines and quick response service.

Our GOAL: save energy and cost for our customer.

Our MISSION: provide high performance solutions to help our customer.

Our VISION: being trustworthy and reliable to our customer and influential to the crusher industry.



MACKORN 上海美矿
美矿 Shanghai Mac

目录 Directory

| | |
|---|------------|
| 公司简介..... | P1 |
| ABOUT MACKORN | |
| 振动给料机..... | P3 |
| Vibrating Grizzly Feeder | |
| 颚式破碎机系列..... | P4 |
| Jaw Crusher Series | |
| 单缸液压圆锥破碎机系列..... | P7 |
| Single Cylinder Hydraulic Cone Crusher series | |
| 多缸液压圆锥破碎机系列..... | P10 |
| Multi-Cylinder Hydraulic Cone Crusher series | |
| 振动筛..... | P16 |
| Vibrating Screen | |
| 反击式破碎机..... | P17 |
| Impact Crusher | |
| 高压辊磨机..... | P19 |
| High Pressure Roller Mill | |
| 高效节能球磨机..... | P21 |
| High Efficient Ball Mill | |
| 破碎筛分联合设备..... | P23 |
| CRUSHING AND SCREENING EQUIPMENT | |
| Q=150TPH破碎筛分联合流程图..... | P25 |
| Q=150TPH CRUSHING AND SCREENING PNANT | |
| Q=250TPH破碎筛分联合流程图..... | P26 |
| Q=250TPH CRUSHING AND SCREENING PNANT | |
| Q=450-500TPH破碎筛分联合流程图..... | P27 |
| Q=450-500TPH CRUSHING AND SCREENING PNANT | |
| Q=1000TPH破碎筛分联合流程图..... | P28 |
| Q=1000TPH CRUSHING AND SCREENING PNANT | |
| 售后：耐磨件..... | P29 |
| After Sales:Wearing Parts | |
| 售后：损耗件..... | P30 |
| After Sales:Spare Parts | |

振动给料机 Vibrating Grizzly Feeder

1. 采用轴偏心振动产生激振力的原理设计，主要用于粗碎破碎机前给料。2. 振动平稳，给料连续、均匀，避免出现死机现象，延长设备使用寿命。3. 在给料的同时，可预筛分细料，提高破碎效率。4. 栅条间隙可调节，防止物料堵塞。5. 可选装调速电机控制给料量，无需频繁启动电机。

1. Using the principle design of "the eccentric shaft vibration producing vibration force", mainly used for coarse crushing crusher before feeding.
2. Smooth vibration, continuous and even feeding, so as to avoid crash phenomenon and prolong the service life of apparatus.
3. When feeding processing, preliminary screening fine material, increase crushing efficiency.
4. Grid gaps can be adjustable, prevent the stuff from jamming.
5. Selectable feeding volume of speed-adjustable motor without starting the motor frequently.

给料机 Vibrating Grizzly Feeder

| 规格型号 Model No. | 最大给料粒度 Max Feeding Granularity (mm) | 转速 Rotating Speed (r/min) | 处理能力 Capacity (t/h) | 功率 Power (kw) | 外形尺寸 Measurement (mm) |
|-------------------|--|------------------------------|------------------------|------------------|--------------------------|
| ZSW380×95 | 500 | ~800 | 80~150 | 11 | 3970×2259×1880 |
| ZSW420×110 | 580 | ~800 | 120~240 | 15 | 4292×2519×2003 |
| ZSW600×130 | 750 | ~800 | 140~450 | 30 | 6124×2863×2051 |
| ZSW600×150 | 600*900*1200 | 500~850 | 150~700 | 37 | 6271×2369×2698 |
| ZSW600×180 | 700*1050*1400 | 600~850 | 180~950 | 45 | 6375×2653×2913 |



颞式破碎机系列 Jaw Crusher Series

MC系列颞式破碎机的主要特性：MACKORN MC系列颞式破碎机均采用创新的模块化、无焊接框架结构，因而赋予设备最大的抗疲劳性、最佳的可靠性和多种安装方式。得益于精确平衡的整体结构，MC系列颞式破碎机安装简便且经济。配合使用特殊的优质铸钢组件和耐久的磨损部件，赋予其卓越的适用性、杰出的经济性和较低的吨运行成本。

The MACKORN MC Series crushers are based on a revolutionary modular, non-welded frame construction, offering owners the highest possible fatigue strength, excellent reliability and numerous mounting possibilities. Thanks to the accurately balanced structure, the MC Series jaws are easy and economical to install. Combined with special high-quality cast steel components and durable wear parts, means exceptionally high crusher availability, cost-efficient crushing and low cost per ton.

| | | MC80 | MC96 | MC100 | MC110 | MC125 | MC140 | MC145 | MC160 | MC200 |
|----------------------------------|-----------------------------------|-------------|-------------|-------------|-------------|-------------|-------------|-------------|-------------|-------------|
| 给料口宽度(mm) Feed opening width | | 800 | 930 | 1000 | 1100 | 1250 | 1400 | 1400 | 1600 | 2000 |
| 给料口深度 (mm) Feed opening depth | | 510 | 580 | 760 | 850 | 950 | 1070 | 1100 | 1200 | 1500 |
| 电机功率 (Kw) Power | | 75 | 90 | 110 | 160 | 160 | 200 | 200 | 250 | 400 |
| 转速 (rpm) speed | | 350 | 330 | 260 | 230 | 200 | 220 | 220 | 220 | 200 |
| 产品尺寸 (mm) Product size | 紧边排料口 (mm) Closed side setting | 吨/小时 T/H | 吨/小时 T/H | 吨/小时 T/H | 吨/小时 T/H | 吨/小时 T/H | 吨/小时 T/H | 吨/小时 T/H | 吨/小时 T/H | 吨/小时 T/H |
| 0-30 | 20 | | | | | | | | | |
| 0-35 | 25 | | | | | | | | | |
| 0-45 | 30 | | | | | | | | | |
| 0-60 | 40 | 65-85 | | | | | | | | |
| 0-75 | 50 | 80-95 | | | | | | | | |
| 0-90 | 60 | 95-125 | 120-155 | | | | | | | |
| 0-105 | 70 | 115-150 | 140-180 | 150-210 | 190-250 | | | | | |
| 0-120 | 80 | 130-170 | 160-210 | 170-225 | 210-275 | | | | | |
| 0-135 | 90 | 150-195 | 180-235 | 190-245 | 235-305 | | | | | |
| 0-150 | 100 | 165-215 | 200-260 | 215-280 | 255-330 | 290-380 | | | | |
| 0-185 | 125 | 210-275 | 250-325 | 265-345 | 310-405 | 350-455 | 385-500 | 400-520 | | |
| 0-225 | 150 | 250-325 | 300-390 | 315-410 | 370-480 | 410-535 | 455-590 | 470-610 | 520-675 | |
| 0-260 | 175 | 290-380 | 350-455 | 370-480 | 425-550 | 470-610 | 520-675 | 540-700 | 595-775 | 760-990 |
| 0-300 | 200 | | | 420-545 | 480-625 | 530-690 | 590-765 | 610-795 | 675-880 | 855-1110 |
| 0-340 | 225 | | | | | 590-770 | 655-850 | 680-885 | 750-975 | 945-1230 |
| 0-375 | 250 | | | | | 650-845 | 725-945 | 750-975 | 825-1070 | 1040-1350 |
| 0-410 | 275 | | | | | | | 820-1070 | 900-1170 | 1130-1470 |
| 0-450 | 300 | | | | | | | | 980-1275 | 1225-1590 |



单缸液压圆锥破碎机系列 Single Cylinder Hydraulic Cone Crusher series

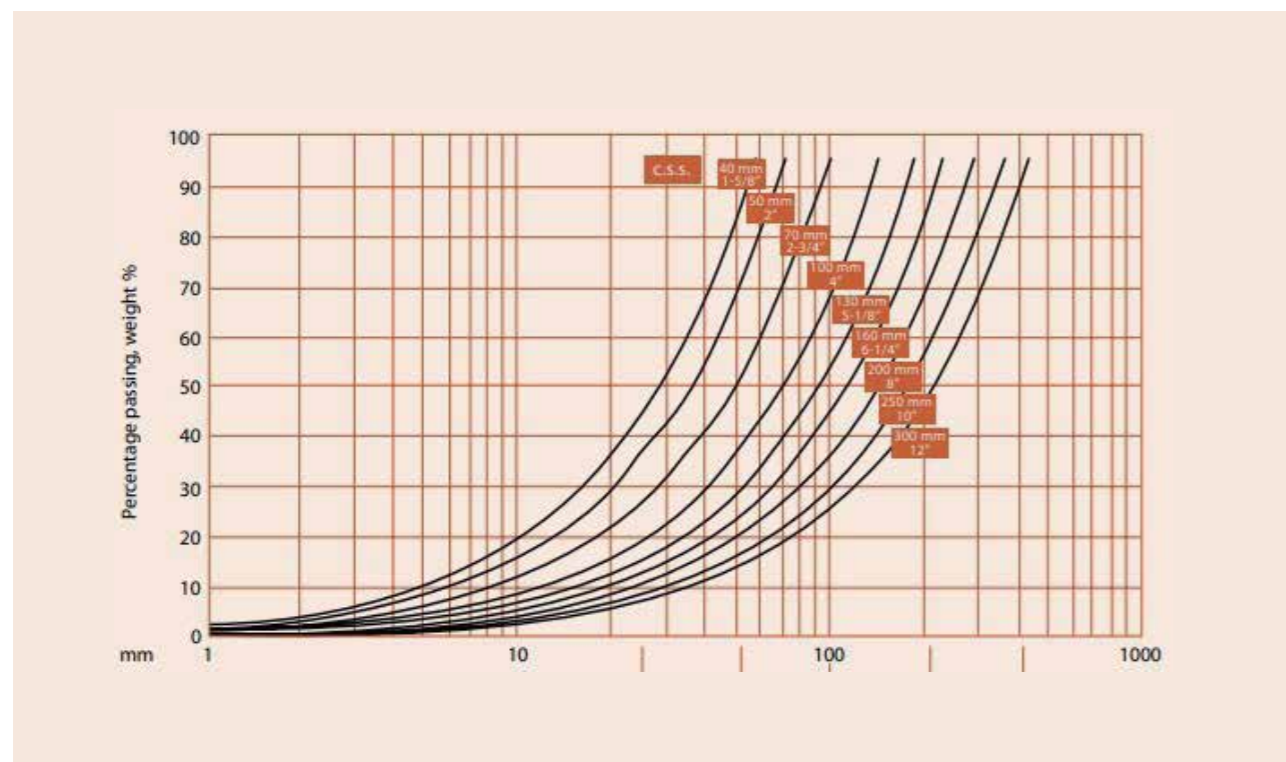
NS与NH系列的高速圆锥破碎机是特别为了您身为采石场场主或经理需要所研发的。结合实际验证的的破碎概念与瑞典顾问的专业知识，这款适用于第二与第三阶段的破碎机引进了最新的科技原理。针对您所渴望的高素质性能和可靠性，这款NS和NH系列的高速圆锥破碎机将能帮助您的石场达到您一直希望却至今却未能达到的期望。

NS和NH系列的高速圆锥破碎机的体型同规格产品虽然比市场上的破碎机小，也相对较轻，可他却能提供高水平的破碎生产。将这款破碎机加上高品质及耐用的原装零配件，他们将能满足现代化采石和破碎的苛刻需求。

NS and NH series high-speed cone crusher is developed especially for you needs as the owner or manager of drilling mineral. According to the proven crushing concepts and professional knowledge from Swedish consultants, the series introduce the latest technological theory applicable to the crushers at stage II and II. Focus on the high-performance and reliability you desire, the NS and NH series high-speed cone crushers can help your drilling mineral meet the expectations your are always hoping but cannot reach so far.

Although the shape of NS and NH series high-speed cone crushers is smaller and lighter than that of the similar cone in the current market, it can realize the crushing production at higher level. The series of crusher plus high quality and durable original spare parts can meet the strict requirement of modern drilling and crushing.

粒度特征曲线
Indicative product gradation



破碎腔Crushing chambers

NS 型破碎机NS-crushers

有三种标准破碎腔型可供选择 Three standard crushing chambers are available:

MC=中粗 Medium Coarse

C=粗 Coarse

EC=特粗 Extra coarse

NH 型破碎机 NH-crushers

多种破碎腔型可供选择 Several standard crushing chambers are available:

EEF=超细 Extra Extra Fine

EF=特细 Extra Fine

EFX=准特细 Extra Fine Xtra

F=细 Fine

MF=中细 Medium Fine

M=中 Medium

MC=中粗 Medium Coarse

C=粗 Coarse

CX=准特粗 Coarse Xtra

EC=特粗 Extra coarse

生产能力, 吨/小时

所给出的数据只是破碎机生产性能的大约指标。表中数据是针对堆比重为1.6T/M³干物料开路生产时的破碎机性能, 并假定给料的最大粒径为破碎机允许的最大给料粒径, 且不含小于破碎机紧边排矿口 (CSS) 的细物料。由于所选的偏心距, 破碎比, 物料的破碎功能指数 (Wi), 给料粒度组成, 循环负荷量, 给料中含泥量等都会影响破碎机的破碎能力, 所以对具体的应用情况, 请向我们进一步咨询。

Performance figures are approximate and give an indication of what the crusher can produce.

They apply to open circuit crushing of dry material with a bulk density of 1600 kg/m³. It is assumed that material much finer than the crusher's closed side setting (CSS) is removed from the feed. Consult us regarding the application of the crusher since the chosen eccentric throw, degree of reduction, the material's crushability (Wi), the size analysis of the feed, the design of any recirculating circuit and the moisture mance of the crusher.

| 紧边排料口CSS (mm) 下的标准生产能力 (吨/小时) Nominal capacity in t/h with crusher running at CSS mm | | | | | | | | | | | | | | | | | | | | | |
|--|--------------|----------------------|----|-----|----|--------|---------|---------|---------|---------|---------|---------|---------|---------|---------|---------|---------|---------|----------|---------|-----|
| | 电机安装功率 power | 最大给料尺寸 Max feed size | 19 | 22 | 25 | 29 | 32 | 35 | 38 | 41 | 44 | 48 | 51 | 54 | 60 | 64 | 70 | 76 | 83 | | |
| | | | KW | mm | | | | | | | | | | | | | | | | | |
| NS 型破碎机 NS-crushers | NS420 | 90 | EC | 240 | 85 | 92-115 | 101-158 | 107-168 | 114-143 | 121 | | | | | | | | | | | |
| | | | C | 200 | 70 | 76-95 | 82-128 | 90-112 | 96 | | | | | | | | | | | | |
| | NS430 | 160 | EC | 360 | | 126 | 138-173 | 147-230 | 156-293 | 165-310 | 174-327 | 183-344 | 196-306 | 205-256 | 214 | | | | | | |
| | | | C | 300 | | 108 | 116-145 | 127-199 | 135-254 | 144-270 | 152-285 | 161-301 | 169-264 | 180 | | | | | | | |
| | | | MC | 235 | 91 | 98-123 | 106-166 | 116-218 | 124-232 | 131-246 | 139-246 | 147-275 | 154-241 | 165 | | | | | | | |
| | NS440 | 220 | EC | 450 | | | | | 267 | 282-353 | 298-446 | 313-563 | 334-601 | 349-524 | 365-456 | | | | | | |
| | | | C | 400 | | | | 225 | 239-299 | 254-381 | 269-484 | 284-511 | 298-448 | 318-398 | 333 | | | | | | |
| | NS660 | 315 | EC | 560 | | | | | | | | 349 | 368-460 | 392-588 | 410-718 | 428-856 | 465-929 | 489-978 | 525-1050 | 562-983 | 604 |
| | | | C | 500 | | | | | | | | 318 | 336-420 | 353-618 | 376-753 | 394-788 | 411-823 | 446-892 | 469-822 | 504-631 | |

| 紧边排料口CSS (mm) 下的标准生产能力 (吨/小时) Nominal capacity in t/h with crusher running at CSS mm | | | | | | | | | | | | | | | | | | | | | |
|--|-------------------------|----------------------|-------------------------|-----|-------|--------|---------|---------|---------|---------|---------|---------|----------|----------|----------|----------|----------|----------|----------|----------|--|
| | 电机安装功率 Power | 最大给料尺寸 Max feed size | 4 | 6 | 8 | 10 | 13 | 16 | 19 | 22 | 25 | 32 | 38 | 44 | 51 | 57 | 64 | 70 | | | |
| | | | KW | mm | | | | | | | | | | | | | | | | | |
| NH 型破碎机 NH-crushers | NH420 | 90 | EC | 135 | | | 46 | 50-85 | 54-92 | 58-99 | 62-105 | 66-112 | 76-128 | | | | | | | | |
| | | | C | 90 | | | | 43-53 | 46-89 | 50-96 | 54-103 | 57-110 | 61-118 | 70 | | | | | | | |
| | | | M | 65 | | | 36-44 | 38-74 | 41-80 | 45-76 | 48-59 | | | | | | | | | | |
| | | | MF | 50 | | 36 | 38-67 | 32-57 | 35-48 | 38 | | | | | | | | | | | |
| | | | F | 38 | 27-34 | 29-50 | 31-54 | 32-57 | 35-48 | 38 | | | | | | | | | | | |
| | | | EF | 29 | | | | | | | | | | | | | | | | | |
| | | | 30-40(80%细度小于4.5-5.5mm) | | | | | | | | | | | | | | | | | | |
| | NH430 | 160 | EC | 185 | | | | 69-108 | 75-150 | 80-161 | 86-171 | 91-182 | 104-208 | 115-208 | | | | | | | |
| | | | C | 145 | | | | 66-131 | 71-142 | 76-152 | 81-162 | 86-173 | 98-197 | 109-150 | | | | | | | |
| | | | MC | 115 | | | 57 | 62-140 | 67-151 | 72-162 | 77-173 | 82-184 | 93-145 | | | | | | | | |
| | | | M | 90 | | | | 64-84 | 69-131 | 75-142 | 80-152 | 86-162 | 91-154 | 104 | | | | | | | |
| | | | MF | 75 | | 61 | 65-106 | 70-115 | 76-124 | 81-126 | 87-114 | 92 | | | | | | | | | |
| | | | F | 50 | 48-78 | 51-83 | 54-88 | 59-96 | 63-103 | 68-105 | 72-95 | 77 | | | | | | | | | |
| | | | EF | 35 | | | | | | | | | | | | | | | | | |
| | 70-90(80%细度小于5-5.6mm) | | | | | | | | | | | | | | | | | | | | |
| | NH440 | 220 | EC | 215 | | | | | 114-200 | 122-276 | 131-294 | 139-313 | 159-357 | 175-395 | 192-384 | | | | | | |
| | | | C | 175 | | | | | 101 | 109-218 | 117-292 | 125-312 | 133-332 | 151-378 | 167-335 | 183-229 | | | | | |
| | | | MC | 140 | | | | | | 97-122 | 105-262 | 113-282 | 120-301 | 128-320 | 146-328 | 161-242 | | | | | |
| | | | M | 110 | | | | | | 117-187 | 126-278 | 136-298 | 145-318 | 154-339 | 176-281 | 194 | | | | | |
| | | | MF | 85 | | | | 114 | 124-227 | 134-245 | 144-263 | 153-281 | 163-299 | 186-248 | | | | | | | |
| | | | F | 70 | | 90-135 | 96-176 | 104-191 | 112-206 | 120-221 | 129-236 | 137-251 | 156-208 | | | | | | | | |
| | | | EF | 38 | | | | | | | | | | | | | | | | | |
| | 100-125(80%细度小于6-7.5mm) | | | | | | | | | | | | | | | | | | | | |
| | NH660 | 315 | EC | 275 | | | | | | 177 | 190-338 | 203-436 | 216-464 | 246-547 | 272-605 | 298-662 | 328-511 | | | | |
| | | | CX | 245 | | | | | | | 174-194 | 187-374 | 200-488 | 212-519 | 242-592 | 268-654 | 293-521 | 323-359 | | | |
| | | | C | 215 | | | | | | | 171-190 | 184-367 | 196-480 | 209-510 | 238-582 | 263-643 | 288-512 | 317-353 | | | |
| | | | MC | 175 | | | | | | | 162-253 | 174-426 | 186-455 | 198-484 | 226-552 | 249-499 | 273-364 | | | | |
| | | | M | 135 | | | | | | | 197-295 | 211-440 | 226-470 | 240-500 | 274-502 | 302-403 | | | | | |
| MF | | | 115 | | | | | 192 | 207-369 | 222-396 | 237-423 | 252-450 | 287-451 | 318-363 | | | | | | | |
| F | | | 85 | | | | | | 195-304 | 210-328 | 225-352 | 241-376 | 256-400 | 292-401 | 323 | | | | | | |
| EF | 65 | | | | | | 211-293 | 227-316 | 244-298 | 261-290 | | | | | | | | | | | |
| NH870 | 500 | EC | 300 | | | | | | | 448-588 | 477-849 | 544-968 | 601-1070 | 658-1172 | 725-1291 | 782-1393 | 849-1512 | 906-1331 | | | |
| | | C | 240 | | | | | | | 406 | 433-636 | 461-893 | 525-1018 | 581-1125 | 636-1232 | 700-1357 | 756-1464 | 820-1461 | 876-1286 | | |
| | | MC | 195 | | | | | | | | 380-440 | 406-723 | 432-837 | 492-954 | 544-1055 | 596-1155 | 675-1272 | 708-1373 | 769-1307 | 821-1206 | |
| | | M | 155 | | | | | | | | 400-563 | 428-786 | 455-836 | 519-953 | 573-1054 | 628-1154 | 692-1271 | 746-1372 | 810-1248 | 865-1098 | |
| | | MF | 100 | | | | | | | | 379-424 | 407-716 | 434-765 | 462-814 | 527-928 | 582-942 | 638-789 | 702 | | | |
| | | F | 90 | | | | | | | | 357-395 | 385-656 | 414-704 | 442-752 | 470-800 | 535-912 | 592-857 | 649-718 | | | |
| | | EF | 80 | | | | | | | | 280-405 | 304-517 | 328-558 | 352-598 | 376-639 | 400-680 | 455-775 | 503-728 | 551-669 | | |

振动筛 Vibrating Screen

圆振动筛做圆形运动，是一种多层数、高效率新型振动筛。它采用筒体式偏心轴激振器及偏心块调节振幅，物料筛淌线长，筛分规格多，结构可靠、激振力强、筛分效率高、振动噪音小、坚固耐用维修方便、使用安全，振幅强弱可调节、各种规格筛选清晰，广泛的应用于矿山、建材、交通、能源、化工等行业的产品分级。

Circle vibrating screen does the circular motion, it is a kind of multilayer, high efficiency new vibrating screen. It uses cylinder asana eccentric shaft vibration exciter and eccentric block adjustment amplitude, with long material screen drip line, many screen specifications, reliable structure, strong vibration force, high effective screening, little vibration noise, rigid and durable, easy maintenance, safe usage, weak amplitude, adjustable, and clear in all kinds of specifications screening, which is widely used in the classification of mining, construction materials, transportation, energy, chemical and other industries product.



| 规格型号 Model No. | 层数 Layer | 筛孔尺寸 Screening Size (mm) | 双振幅 Dual Amplitude | 振次 Vibration Time | 最大给料粒度 Max Feeding Granularity(mm) | 生产能力 Capacity (t/h) | 功率 Power (kw) |
|-------------------|-------------|-----------------------------|-----------------------|----------------------|---------------------------------------|------------------------|------------------|
| YK1545 | 1/2/3/4 | 6-100 | 8-10 | 970 | 200 | 80-450 | 11/15/22/30 |
| YK1836 | 3 | 6-100 | 8-10 | 970 | 200 | 81-405 | 22 |
| YK1845 | 2 | 6-100 | 8-10 | 800 | 200 | 97-486 | 30 |
| YK1854 | 1/2/3/4 | 6-100 | 8-10 | 800 | 200 | 113-600 | 22/30/30/45 |
| YK1860 | 1/2/3 | 6-100 | 8-10 | 800 | 200 | 120-650 | 22/30/37 |
| YK2052 | 2/3/4 | 6-100 | 8-10 | 800 | 200 | 126-630 | 30/37/45 |
| YK2160 | 2/3/4 | 6-100 | 8-10 | 800 | 200 | 144-755 | 37/45/45 |
| YK2460 | 1/2/3 | 6-100 | 8-10 | 800 | 200 | 172-880 | 37/45 |
| YK3060 | 2 | 6-100 | 8-10 | 800 | 200 | 216-1080 | 45 |



反击式破碎机 Impact Crusher

PFQ系列涡旋强力反击式破碎机是我公司研制开发的高效反击式破碎机,该产品适用于抗压强度不超过250MPa的各种物料的粗、中、细碎作业,具有结构独特、操作方式简便、高效节能、产品形状呈立方体、排料粒度小可调、可选择破碎、简化破碎流程、节约成本等特点。该机广泛应用于水电、高速公路人工砂石料的破碎作业。产品结构设计独特,有漩涡破碎腔和P、S、T三段破碎区,采用有键锥套连接的转子体,插入安装的高效耐磨板锤,倾斜轴承座,独特的齿形反击衬板,多方位开门机架,丝杆或液压开启装置。更换易损件,检修更加方便。大型机型还有板锤更换起吊专门工具供客户选择。

PFQ series Impact Crusher developed by us is a high-efficiency crusher. The machine is suitable for crushing of all materials with compressive resistance smaller than 250MPa, coarse, medium and fine.

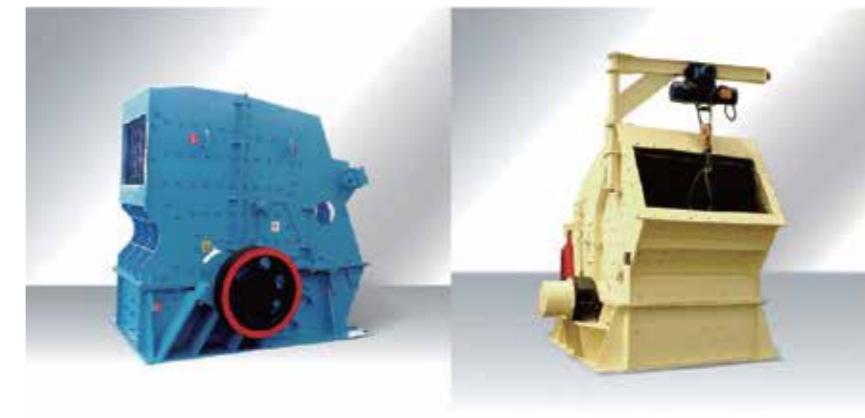
The machine has a special structure to ensure easy operation and maintenance. It has three impact stages, which form a special crushing chamber with the rotating rotor. The wearing resistant material hammers are pined into the rotor. The impact plates have teeth on the surface to help with better crushing result. There are a few maintenance doors opened in all sides of the machine. The lifting of the upper shell of the machine is power by hydraulic device.

The output particles always have a very good cubic shape, which is preferred in building highway or skyscrapers. And it is 17% more energy saving than other impact crushers. With the help of a screen, we can get whatever size we need from the impact crusher.



反击破 Impact Crusher

| 规格 型号 Model No. | 最大给料粒度 (mm) Max Feeding granularity | | 排料粒度 Discharge granularity (mm) | 生产能力 Capacity (t/h) | 功率 Power (kw) | 外形尺寸 Measurement (mm) |
|-----------------------|--|---------|---------------------------------------|---------------------------|---------------------|-----------------------------|
| | <150MPa | <250MPa | | | | |
| PFQ0808 | 200 | 150 | -25 (80-90%) | ~46 | 55 | 1900×1860×2150 |
| PFQ1108 | 300 | 180 | -30 (80-90%) | ~80 | 75 | 2845×2000×2265 |
| PFQ1110 | 400 | 200 | -35 (80-90%) | ~110 | 110 | 2845×2250×2262 |
| PFQ1113 | 400 | 200 | -40 (80-90%) | ~150 | 132 | 2845×2420×2265 |
| PFQ1310 | 500 | 250 | -40 (80-90%) | ~180 | 160 | 3050×2120×2900 |
| PFQ1313 | 500 | 250 | -40 (80-90%) | ~225 | 200 | 3050×2420×2900 |
| PFQ1315 | 600 | 300 | -50 (80-90%) | ~280 | 250 | 3050×2675×2900 |
| PFQ1320 | 600 | 300 | -50 (80-90%) | ~350 | 2×200 | 3050×3200×2900 |
| PFQ1515 | 700 | 350 | -50 (80-90%) | ~400 | 2×220 | 4310×3030×3660 |
| PFQ1520 | 800 | 400 | -50 (80-90%) | ~500 | 2×250 | 4310×3830×3660 |
| PFQ1720 | 900 | 450 | -50 (80-90%) | ~580 | 2×280 | 5540×38,30×4600 |
| PFQ1725 | 1000 | 500 | -50 (80-90%) | ~670 | 2×315 | 5540×4330×46 |



高压辊磨机 High Pressure Roller Mill

高压辊磨机喂料仓内的待粉碎物料,通过可调节开口大小的给料器进入高压辊磨机的破碎腔(该料流空间上下连续、贯通,可实现3m以上的料柱,确保形成足够的给矿压力),挤满破碎腔的物料,在辊子的相向转动和料柱重的双重作用下,强制进入不断压缩的空间,并被压实(排矿料饼密度达到矿石真密度的0.85倍),达到一定压力时遭到粉碎或在颗粒内部形成微裂纹。

The materials ready to crush in the feed cabinet of High pressure roller mill can enter the crushing cavity of high pressure roller mill through the feeder of which the opening size can be adjustable (the material space continuous up and down, thoroughly so as to realize 3m above the stock column, ensure to produce sufficient mine pressure), packed with the crushing cavity material, in the roll counter rotating and stock column heavy dual function, forced into continuous compression space, and compaction (ore material cake density can reach 0.85 times of ore true density), are shattered or in grain formed within the micro crack when reaching a certain pressure



高压辊磨机 High Pressure Roller Mill

| 型号 Mode No. | | 200-160 | 180-120 | 180-100 | 170-120 | 170-100 | 150-90 | 140-65 | 140-40 | 140-30 |
|--|------------------|--------------------|----------------|---------|----------------|---------|--------------------|----------------|---------|---------|
| 辊子直径 Roller Diameter | mm | 2000 | 1800 | 1800 | 1700 | 1700 | 1500 | 1400 | 1400 | 1400 |
| 辊子宽度 Roller Width | mm | 1600 | 1200 | 1000 | 1200 | 1000 | 900 | 650 | 400 | 300 |
| 物料通过量 Throughput | 石灰石 Limestone | 1030~1550 | 650~1000 | 518~800 | | 496~757 | 400~588 | 265~405 | 163~209 | 122~187 |
| | 熟料 Clinker | 1057~1507 | 678~966 | | 577~824 | 458~623 | 364~495 | 245~334 | 150~204 | 113~154 |
| | 矿渣 Slag | 967~1316 | 967~1316 | 413~585 | 476~647 | 379~539 | 315~428 | 212~288 | 130~178 | 98~133 |
| 入料粒度/最大 | %, mm | F95s60 Fmaxs100 | F95s55/Fmaxs90 | | F95s50/Fmaxs85 | | F95s45/ Fmaxs75 | F95s42/Fmaxs70 | | |
| 一次通过料饼料度平均值 Average of feed cake size through the line < 2mm/0.16mm | 石灰石 Limestone | 80/25 | 75/25 | 75/25 | 75/25 | 75/25 | 75/25 | 75/25 | 75/25 | 75/25 |
| | 熟料 Clinker | 65/20 | 65/20 | 65/20 | 65/20 | 65/20 | 65/20 | 65/20 | 65/20 | 65/20 |
| | 矿渣 Slag | 70/18 | 70/18 | 70/18 | 70/18 | 70/18 | 70/18 | 70/18 | 70/18 | 70/18 |
| 线速度 linear velocity /Max | | 2.5 | 2.3 | 2.3 | 2.1 | 2.1 | 1.9 | 1.8 | 1.8 | 1.8 |
| 配套电机功率 Motor Power/Max | | 4500 | 3050 | 2860 | 2770 | 2400 | 1700 | 1150 | 710 | 500 |



高效节能球磨机 High Efficient Ball Mill

高效节能球磨机广泛应用于黑色、有色金属矿山、非金属矿山、建材、化工、电力、煤炭、交通、轻工等工业部门。我公司生产的高效节能球磨机均用滚动轴承支承代替轴瓦滑动轴承支承，节能10%~20%。在同等功率条件下，生产能力提高10%~20%。采用干油润滑脂代替稀油润滑站，大型磨机不需配备价格高昂的高低压润滑站。直径 $\phi 2700$ mm以上的矿用球磨机可以采用高压电机、气动离合器、大齿轮干油喷雾润滑和慢速驱动装置，以供盘车，维修使用。用户可根据需要选配。格子型球磨机的出料端有格子板，装球量较多，装机功率较大，生产能力较高，排矿粒度较粗，一般用于一段粗磨作业；溢流型球磨机的出料端无格子板，排料口较高，装球量较少，装机功率较小，产量较低，排矿粒度较细，一般用于二段细磨作业。

High efficiency and energy saving ball mill is widely used in black, non-ferrous metal mines and nonmetal mines, construction materials, chemical industry, electric power, coal, transportation, light industry and other industrial departments. Our company produces the high efficiency and energy saving ball mill by using the rolling bearing to replace bearing bush sliding bearing, so as to save energy of 10% ~ 20%. Under the same power condition, the production capacity is increased by 10% ~ 20%. By adopting the dry oil grease lubrication station replacing thin oil, the large mill does not need to be equipped with the high cost of the high and low pressure lubrication station. The mining ball mill with the diameter of $\phi 2700$ mm above can adopt high pressure motor, pneumatic clutch and gear dry oil spray lubrication and slow drive device for the use of turning and maintenance. Users can select to equip as per their need. There is the grating in lattice type ball mill of the discharge end, with more ball charging, installed power is larger, production capacity is higher, the ore granularity is thicker, which are used for a period of coarse grinding operation; There is not grating in the overflow type ball mill of the discharge end, discharge opening is higher, ball charging is less, installed power is less, so the yield is low and discharge ore particle size is fine, which are generally used for binary fine grinding operation.



高效节能球磨机 High Efficient Ball Mill

| 规格型号 Model No. | 筒体尺寸 (mm) Size of Cylinder | 筒体有效容积 Effective Capacity of Cylinder (m ³) | 装球量 (t) Ball Charging | 筒体转速 Rotating Speed of Cylinder (r/min) | 功率 Power (kw) | 排矿粒度 Discharge Granularity (mm) | 产量 Capacity (t/h) |
|-------------------|-------------------------------|--|--------------------------|--|------------------|------------------------------------|----------------------|
| | 直径*长度 Diameter * Length | | | | | | |
| GMQG1530 | 1500*3000 | 4 | 8 | 27.6 | 75 | 0.8-0.074 | 12-2.8 |
| GMQG1830 | 1800*3000 | 6.5 | 13 | 25.3 | 132 | 0.8-0.074 | 21-4.8 |
| GMQG1840 | 1800*4000 | 8.65 | 17.3 | 25.3 | 185 | 0.8-0.074 | 28-6.6 |
| GMQG1845 | 1800*4500 | 9.75 | 19.5 | 25.3 | 210 | 0.8-0.074 | 31-7.2 |
| GMQG2122 | 2100*2200 | 6.7 | 14.7 | 23.8 | 160 | 0.8-0.074 | 24-5.3 |
| GMQG2130 | 2100*3000 | 9.2 | 17 | 23.8 | 185 | 0.8-0.074 | 26-6.0 |
| GMQG2140 | 2100*4000 | 12.2 | 20.5 | 23.8 | 220 | 0.8-0.074 | 32-7.2 |
| GMQG2145 | 2100*4500 | 13.8 | 22 | 23.8 | 250 | 0.8-0.074 | 36-8.1 |
| GMQG2424 | 2400*2400 | 9.8 | 20 | 22.8 | 220 | 0.8-0.074 | 32-6.6 |
| GMQG2430 | 2400*3000 | 12.2 | 25 | 22.8 | 250 | 0.8-0.074 | 38-7.5 |
| GMQG2440 | 2400*4000 | 16.2 | 33 | 22.8 | 355 | 0.8-0.074 | 47-9.5 |
| GMQG2445 | 2400*4500 | 18.2 | 37 | 22.8 | 400 | 0.8-0.074 | 55-10.5 |
| GMQG2721 | 2700*2100 | 10.7 | 24 | 21.7 | 280 | 3.0-0.074 | 84-8.5 |
| GMQG2730 | 2700*3000 | 15.3 | 32.5 | 21.7 | 355 | 3.0-0.074 | 120-10 |
| GMQG2736 | 2700*3600 | 18.4 | 39 | 21.7 | 400 | 3.0-0.074 | 145-12 |
| GMQG2740 | 2700*4000 | 20.5 | 43 | 21.7 | 450 | 3.0-0.074 | 159-13 |
| GMQG2745 | 2700*4500 | 23 | 50 | 21.7 | 500 | 3.0-0.074 | 180-15 |
| GMQG3231 | 3200*3100 | 22.65 | 46.9 | 18.6 | 500 | 3.0-0.074 | 182-16 |
| GMQG3240 | 3200*4000 | 29.2 | 57 | 18.6 | 630 | 3.0-0.074 | 210-22 |
| GMQG3245 | 3200*4500 | 32.8 | 65 | 18.6 | 710-800 | 3.0-0.074 | 235-29 |
| GMQG3254 | 3200*5400 | 39.2 | 81.6 | 18.6 | 800-1000 | 3.0-0.074 | 280-35 |
| GMQG3640 | 3600*4000 | 35.6 | 75 | 17.3 | 800 | 3.0-0.074 | 230-25 |
| GMQG3650 | 3600*5000 | 45.3 | 96 | 17.3 | 1120 | 3.0-0.074 | 288-35 |
| GMQG3660 | 3600*6000 | 54.4 | 117 | 17.3 | 1250-1500 | 3.0-0.074 | 310-38 |
| GMQG3685 | 3600*8500 | 79 | 144 | 17.3 | 1800 | 3.0-0.074 | 450-50 |

*最大直径6.5米 Diameter up to 6.5m

破碎筛分联合设备

CRUSHING AND SCREENING EQUIPMENT

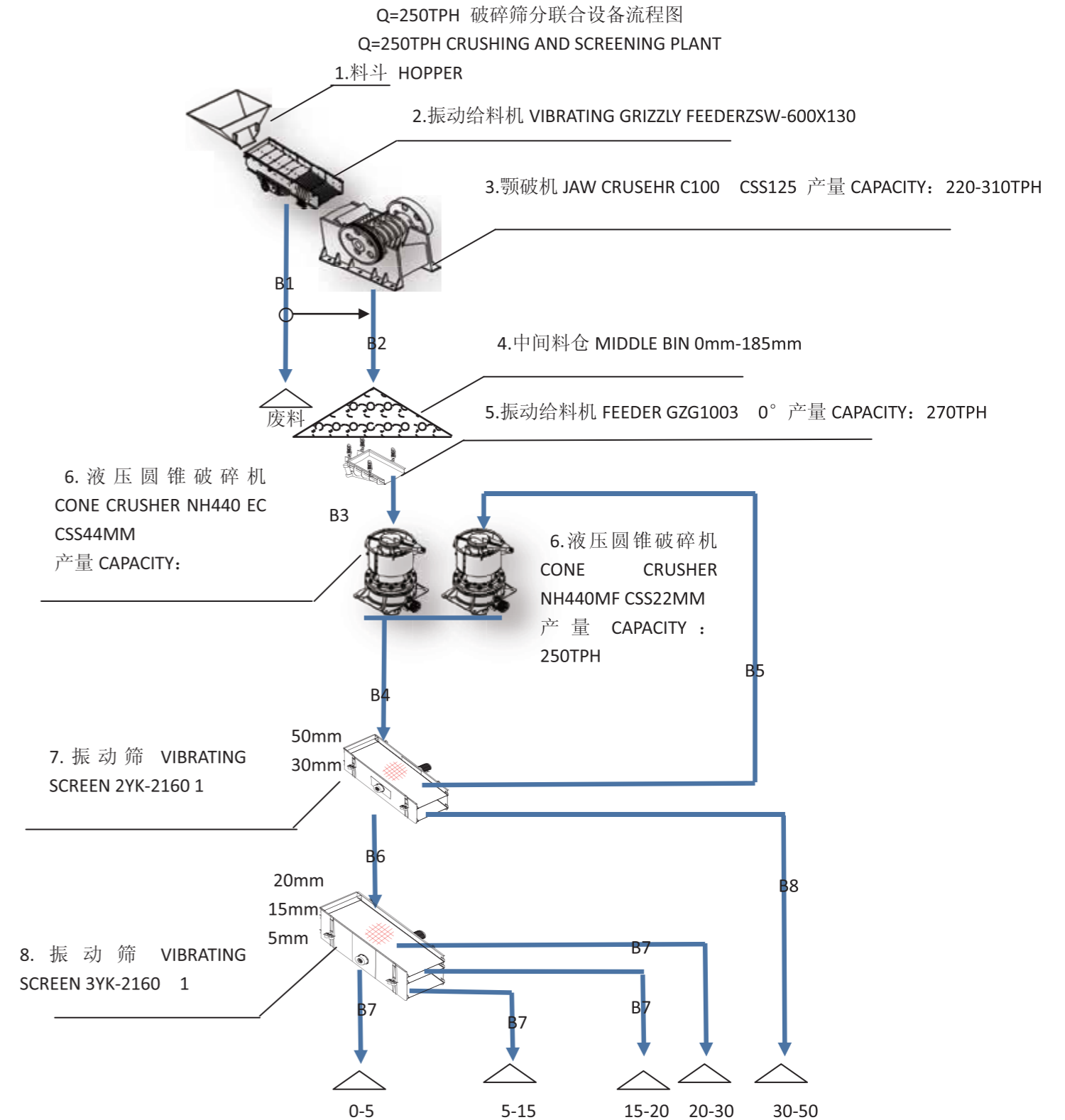
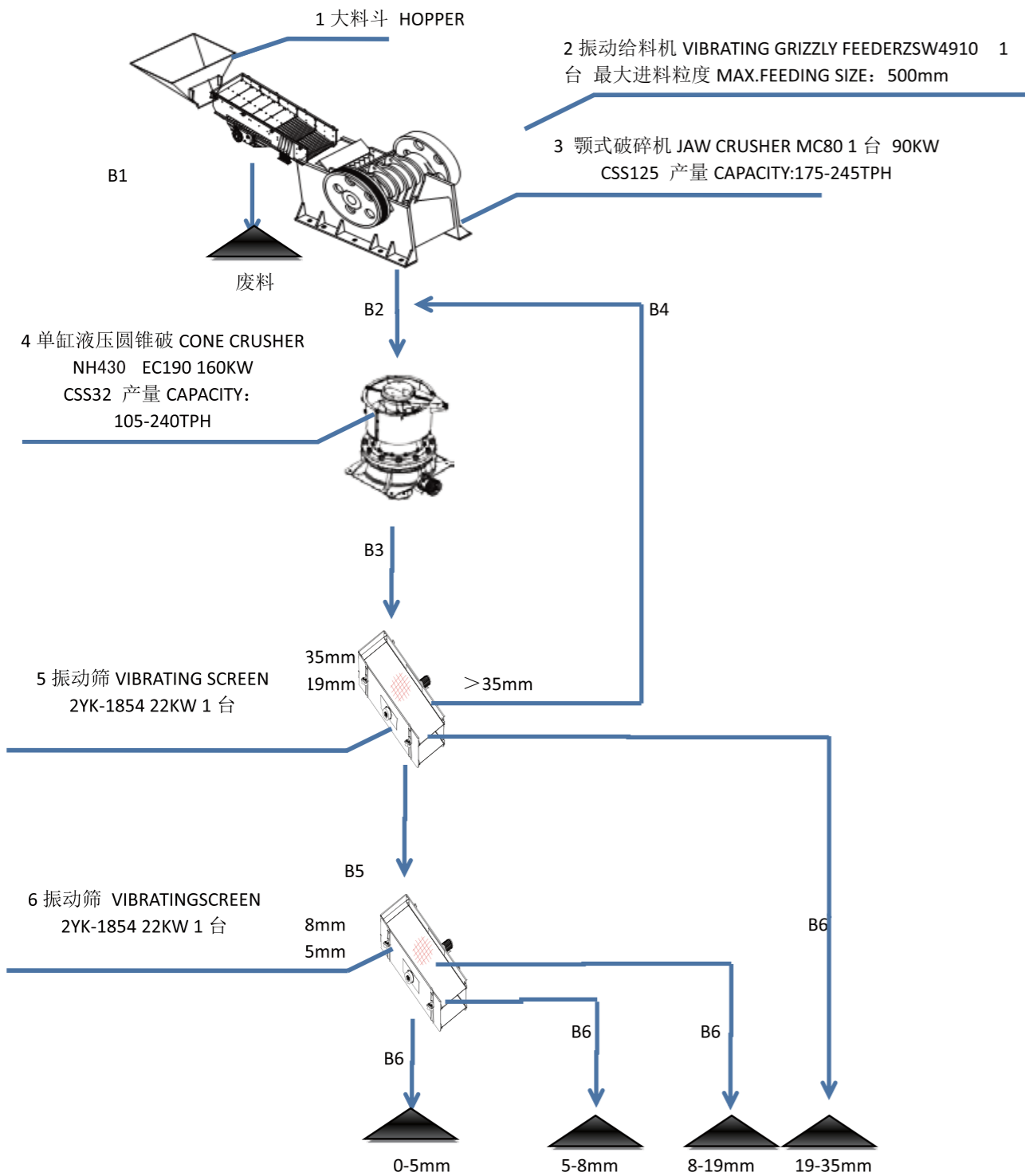


Q=150TPH破碎筛分联合流程图

Q=150TPH CRUSHING AND SCREENING PNANT

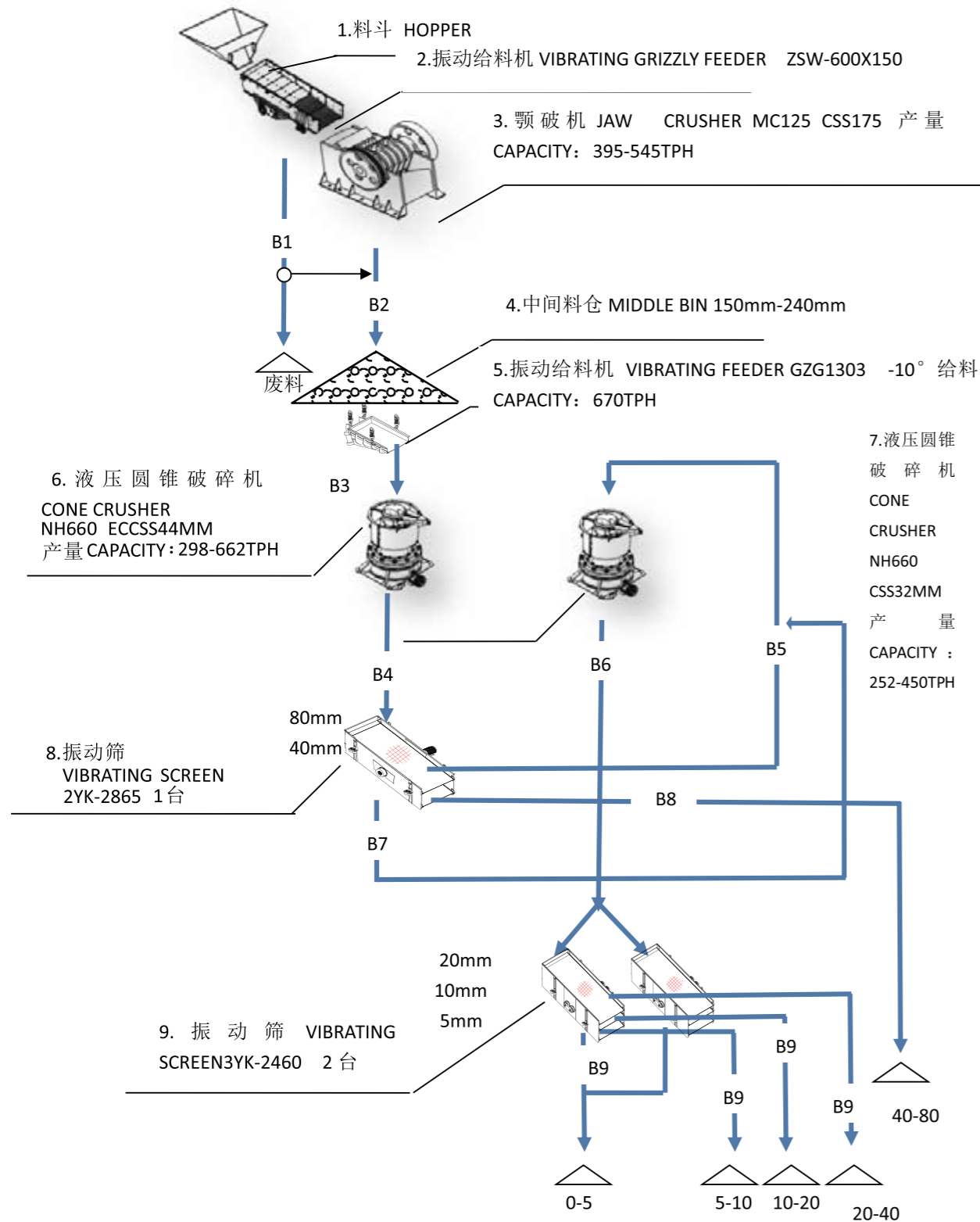
Q=250TPH破碎筛分联合流程图

Q=250TPH CRUSHING AND SCREENING PNANT



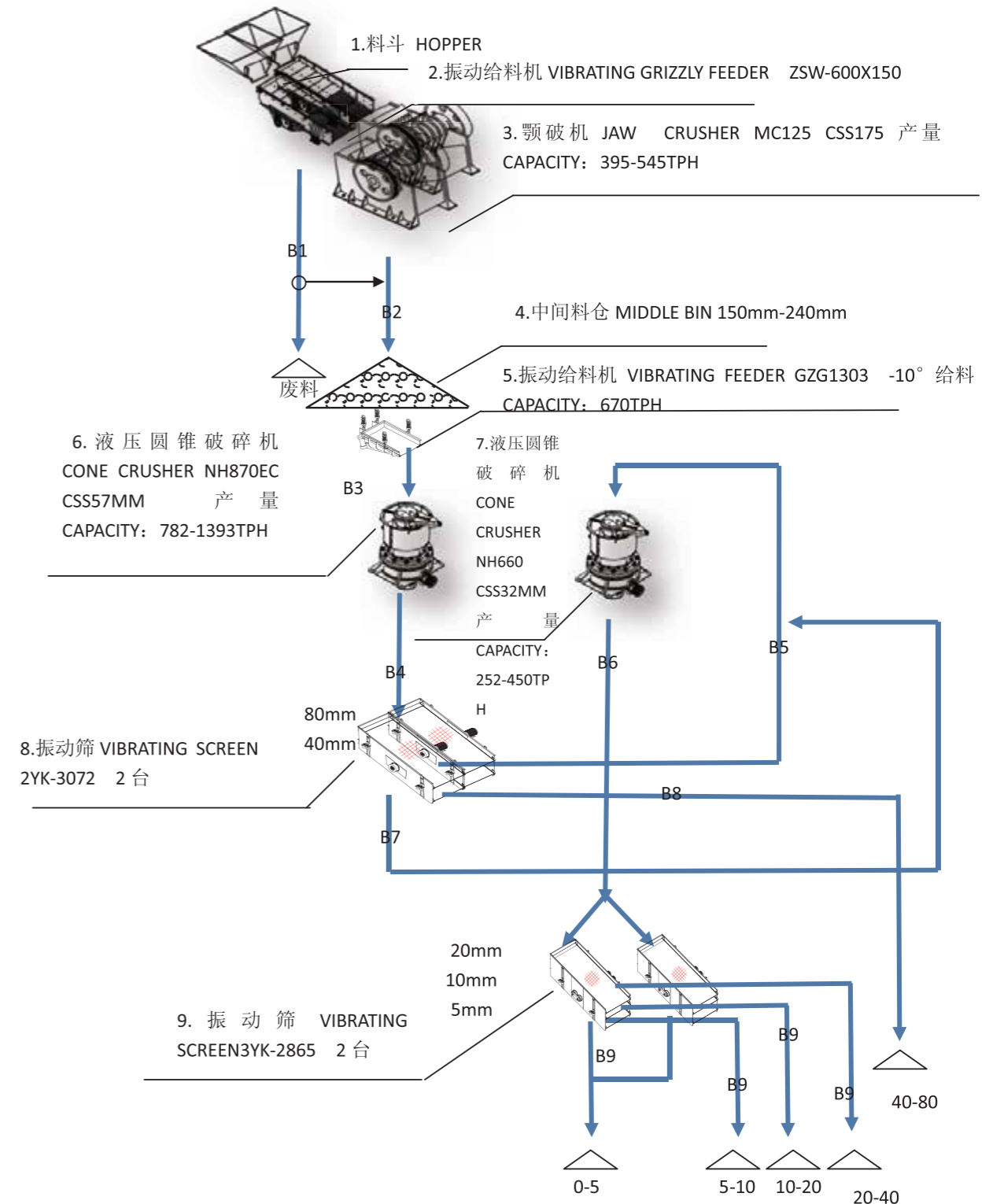
Q=450-500TPH破碎筛分联合流程图

Q=450-500TPH CRUSHING AND SCREENING PNANT



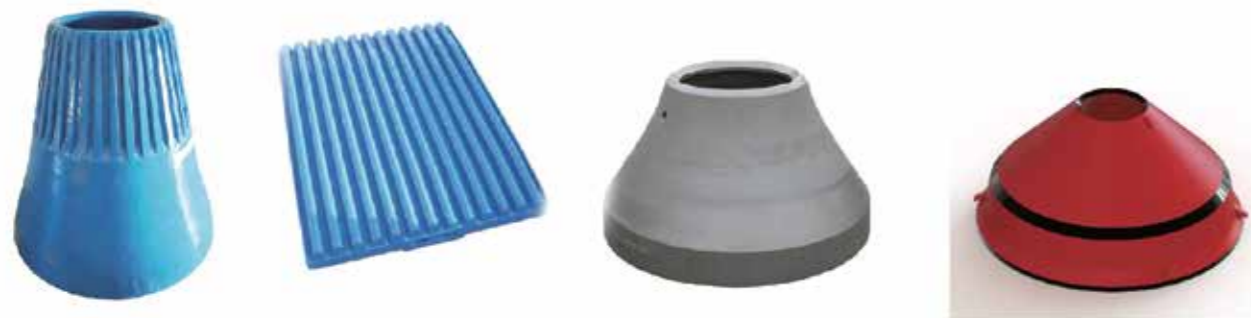
Q=900-1000TPH破碎筛分联合流程图

Q=1000TPH CRUSHING AND SCREENING PNANT



售后：耐磨件

After Sales:Wearing Parts



售后：损耗件

After Sales:Spare Parts



